

Operating and maintenance instructions SG 1

When operating and maintaining the pliers, there are many risks of injury and property damage.

That's why:

- Please read these operating instructions carefully before operation and maintenance.
- Always observe the notes and information contained therein, especially the safety notes.
- If you lose the operating instructions, you can get a new copy online:

www.cors.technology

In the event of unauthorized modifications, the manufacturer is not liable for any liability or warranty.

Warranty and liability claims are also excluded if they can be traced back to one or more of the following causes:

- Improper use of the product
- improper assembly, operation and maintenance of the product
- Failure to observe the information in the operating instructions
- Inadequate maintenance or repair
- Force majeure

Requirements for the staff

The shooting apparatus is not a toy

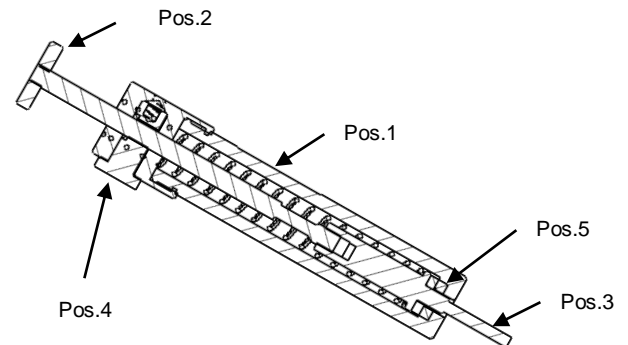
The product only be operated by competent personnel who is authorized to do so in accordance with COUNCIL REGULATION (EC) No 1099/2009 of 24 September 2009 on the protection of animals at the time of killing.

It may only be used for the intended purpose.

The device should only be cocked when necessary.

Keep out of the reach of children.

There is a risk of injury if misused.



tensioning of the apparatus

Grasp the device with one hand on the piston (POS.1) (right-handed person with left hand and vice versa).

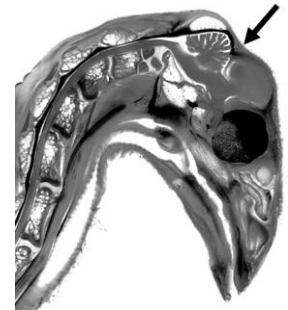
Pull the handle with the other hand (POS.2) When pulling, make sure that there is no danger of involuntarily letting go.

The needle (POS.3) engages visibly and audibly on the release lever.

The device is now ready for operation (armed)

attachment of the apparatus

Hold the device in your right hand (left-handed vice versa). Fixate the animal with the other hand. The shooting apparatus must be applied to the poultry skullcap. There is a slight indentation in its center, which can be seen below the arrowhead in the image. The arrow also shows the ideal shooting direction, which is between the eye and the auditory canal. Be careful not to put yourself or other people in your vicinity at risk! Press the release button (item 4) with your thumb. The needle that comes loose penetrates about 3 cm into the animal's brain and numbs it painlessly and quickly.



notice:

The device is not intended to kill the animal. It is used for stunning poultry from 3 up to 25kg. The ZG2 plier are required for the kill. Find more information about this model on the homepage.

Device care

Clean the device after each use and regularly treat the interior with silicone spray. Store only in the relaxed state.

To practice, never shoot the apparatus empty, but always place it on a suitable surface, such as soft wood or cardboard.

This protects the shock absorber (POS. 5).

Always put down vertically to avoid bending the needle.

Copyright protection

These operating instructions are protected by copyright.

Reprinting and duplication of any kind, including extracts, require the manufacturer's written approval.

The manufacturer reserves the right to make misprints and the right to make changes to devices, packaging and all accompanying documents such as operating instructions without prior notice.